

**BNIP1 Antibody (N-term)**  
**Affinity Purified Rabbit Polyclonal Antibody (Pab)**  
**Catalog # AP19321a****Specification**

---

**BNIP1 Antibody (N-term) - Product Information**

Application	WB,E
Primary Accession	<a href="#">O12981</a>
Other Accession	<a href="#">NP_001196.2</a>
Reactivity	Human
Host	Rabbit
Clonality	Polyclonal
Isotype	Rabbit IgG
Calculated MW	26132
Antigen Region	26-55

**BNIP1 Antibody (N-term) - Additional Information****Gene ID** 662**Other Names**

Vesicle transport protein SEC20, BCL2/adenovirus E1B 19 kDa protein-interacting protein 1, Transformation-related gene 8 protein, TRG-8, BNIP1, NIP1, SEC20L

**Target/Specificity**

This BNIP1 antibody is generated from rabbits immunized with a KLH conjugated synthetic peptide between 26-55 amino acids from the N-terminal region of human BNIP1.

**Dilution**

WB~~1:1000

E~~Use at an assay dependent concentration.

**Format**

Purified polyclonal antibody supplied in PBS with 0.09% (W/V) sodium azide. This antibody is purified through a protein A column, followed by peptide affinity purification.

**Storage**

Maintain refrigerated at 2-8°C for up to 2 weeks. For long term storage store at -20°C in small aliquots to prevent freeze-thaw cycles.

**Precautions**

BNIP1 Antibody (N-term) is for research use only and not for use in diagnostic or therapeutic procedures.

**BNIP1 Antibody (N-term) - Protein Information****Name** BNIP1

**Synonyms** NIP1, SEC20L

**Function** As part of a SNARE complex may be involved in endoplasmic reticulum membranes fusion and be required for the maintenance of endoplasmic reticulum organization (PubMed:[15272311](#)). Also plays a role in apoptosis (PubMed:[15272311](#), PubMed:[23896122](#), PubMed:[7954800](#)). It is for instance required for endoplasmic reticulum stress-induced apoptosis (PubMed:[23896122](#)). As a substrate of RNF185 interacting with SQSTM1, might also be involved in mitochondrial autophagy (Probable).

**Cellular Location**

Endoplasmic reticulum membrane; Single-pass type IV membrane protein. Mitochondrion membrane; Single-pass type IV membrane protein. Note=Localization to the mitochondrion is regulated by RNF186.

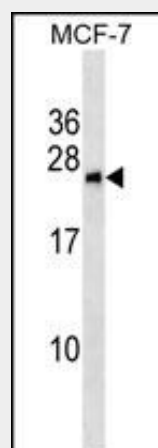
**Tissue Location**

Isoform 1 is highly expressed in heart, brain, liver skeletal muscle and pancreas. Isoform 3 is moderately expressed in placenta, lung and kidney. Isoform 4 is highly expressed in testis and small intestine.

**BNIP1 Antibody (N-term) - Protocols**

Provided below are standard protocols that you may find useful for product applications.

- [Western Blot](#)
- [Blocking Peptides](#)
- [Dot Blot](#)
- [Immunohistochemistry](#)
- [Immunofluorescence](#)
- [Immunoprecipitation](#)
- [Flow Cytometry](#)
- [Cell Culture](#)

**BNIP1 Antibody (N-term) - Images**

BNIP1 Antibody (N-term)(Cat. #AP19321a) western blot analysis in MCF-7 cell line lysates (35ug/lane). This demonstrates the BNIP1 antibody detected the BNIP1 protein (arrow).

**BNIP1 Antibody (N-term) - Background**

This gene is a member of the BCL2/adenovirus E1B 19

kd-interacting protein (BNIP) family. It interacts with the E1B 19 kDa protein which is responsible for the protection of virally-induced cell death, as well as E1B 19 kDa-like sequences of BCL2, also an apoptotic protector. Alternative splicing of this gene results in four protein products with identical N- and C-termini.

#### **BNIP1 Antibody (N-term) - References**

Wang, L., et al. Cancer Epidemiol. Biomarkers Prev. 17(12):3558-3566(2008)  
Lamesch, P., et al. Genomics 89(3):307-315(2007)  
Nakajima, K., et al. EMBO J. 23(16):3216-3226(2004)  
Zhang, H., et al. FEBS Lett. 448(1):23-27(1999)  
Kataoka, N., et al. Nucleic Acids Res. 23(18):3638-3641(1995)